



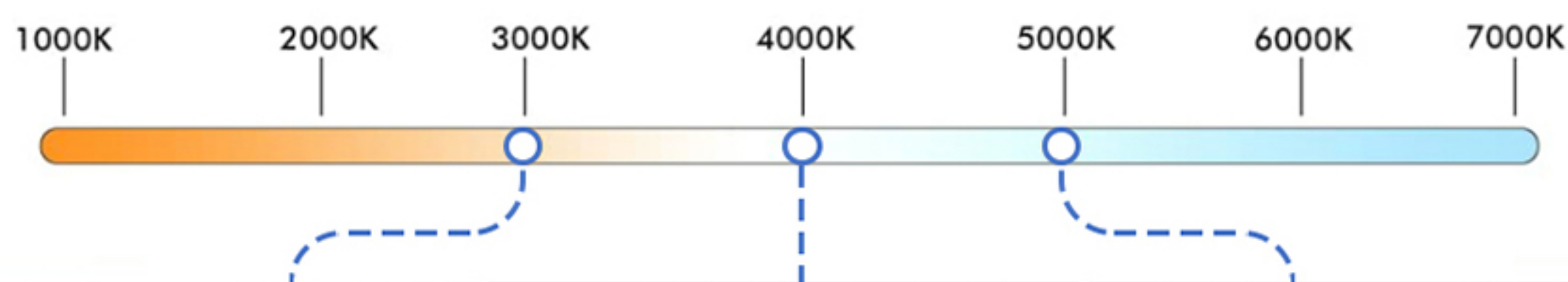
LED STEP LIGHT

High Features

- DIE-CAST ALUMINUM LIGHTING BODY
- FROSTED PC LENS
- ETL LISTED
- DESIGN FOR STANDARD UNITED STATES JUNCTION BOX
- WHITE/ORB COLORS BODY FINISHING OPTIONAL
- 3000K/4000K/5000K OPTIONAL
- SUITABLE FOR WET LOCATION
- EASY INSTALLATION
- SAVE ENERGY



3 COLOR TEMPERATURE SELECTABLE

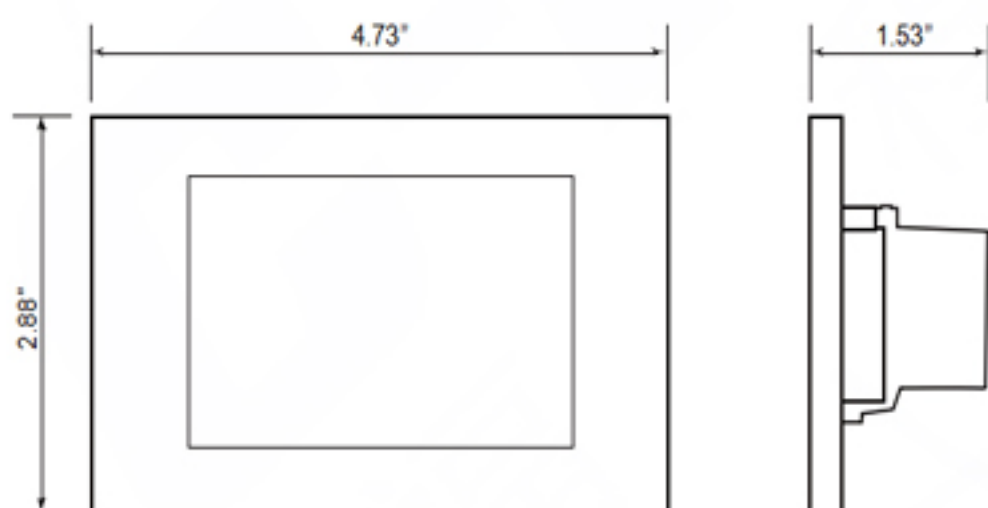


Optical/Electrical Data

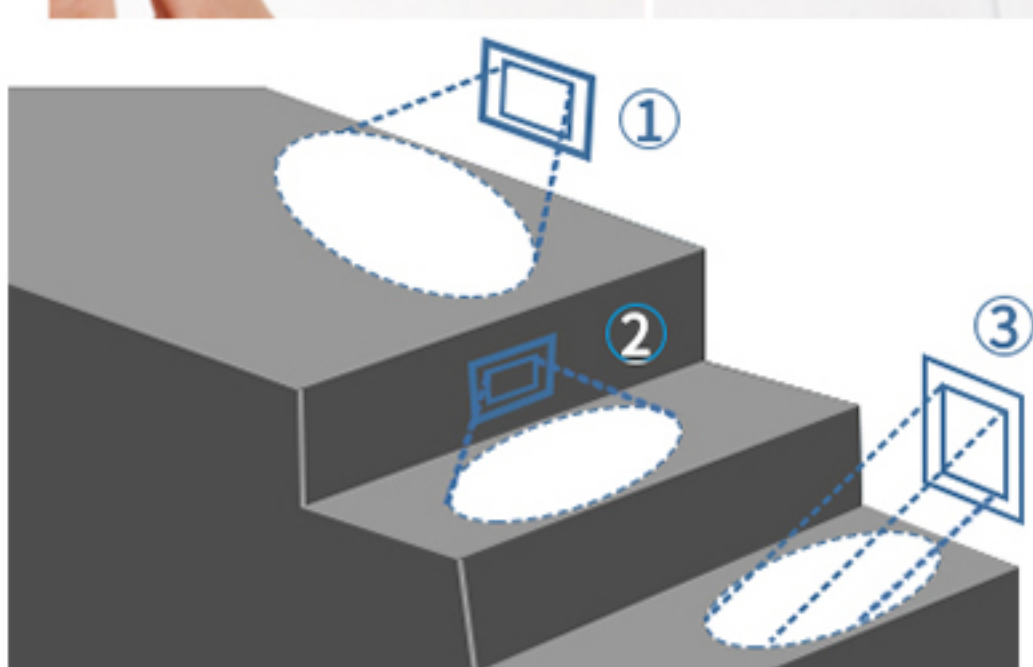
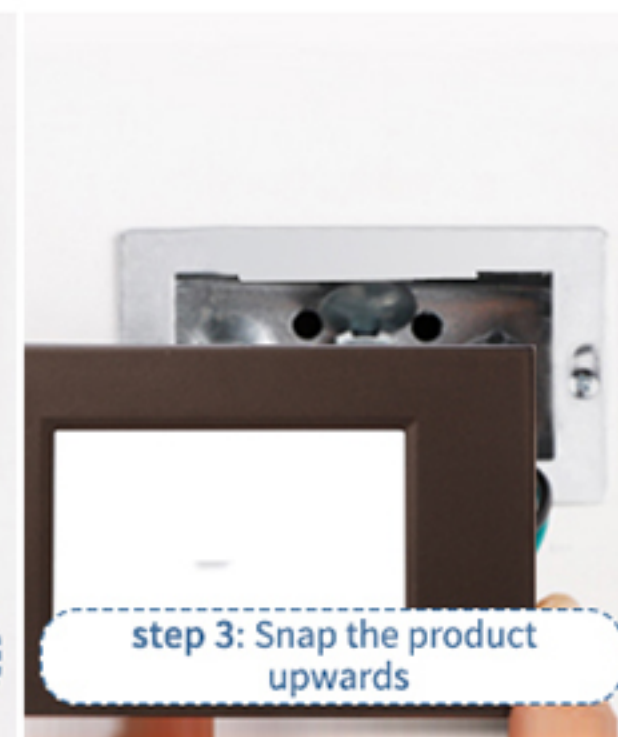
Model No	9200
Wattage	3.5W
Voltage	12-24V AC/DC
LED Type	SMD2835
Lumens	200lm
Color Temp	3000K/4000K/5000K
CRI	>90
Product weight	0.43lbs
Beam Angle	120°
Lifespan	50,000hrs
Working temp	-4°F -104°F
Body Material	Aluminum
Lens Material	PC
Cable Material	Copper
Wet Location	IP65

Others

Inner pack	6.57"(L)x4.84"(W)x3.15"(H)
Pcs/ Inter pack	3PC
Outer pack	13.4"(L)x10.4"(W)x13.78"(H)
Pcs/ Outer pack	48PCS
Net Weights	20.42LBS
Gross Weights	23.15LBS



DUAL MOUNTING OPTIONS AVAILABLE STAIR

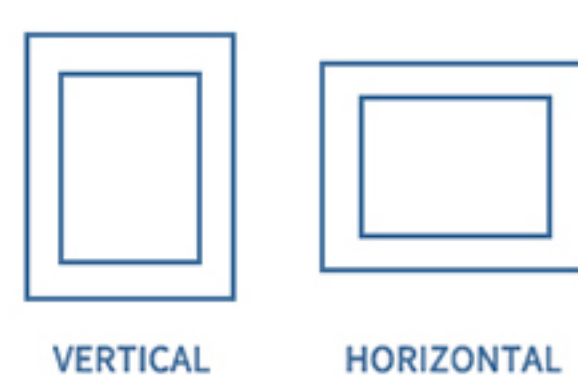


1. CORRIDOR-wall mount

2. STAIRS-step mount

3. STAIRS-wall mount

HORIZONTAL MOUNT WALL & VERTICAL MOUNT



VERTICAL

HORIZONTAL